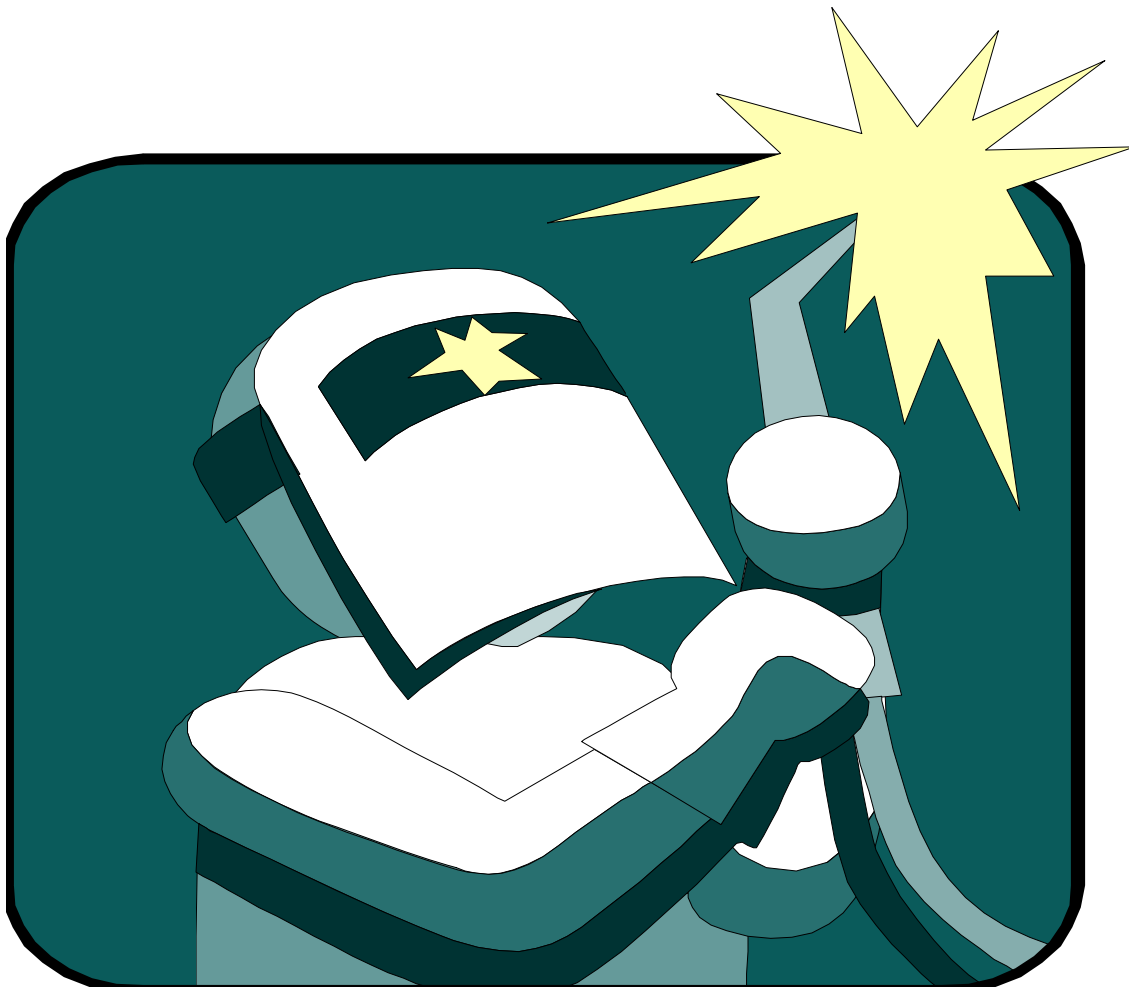


Spot Welder

SAFETY SUGGESTIONS

1. Always wear a protective face shield in addition to proper eye protection.
2. Do not weld with wet hands or in a damp area.
3. Do not touch the tips, tongs, or welded material after welding as they become very hot.
4. Never leave the spot welder unattended with the electrical cord plugged in.
5. The metal being spot-welded must be clean and dry.
6. When spot welding galvanized material, remove the galvanize from the area being welded.



Safety Quiz—Spot Welder

Student Name _____
Class _____
Date _____ Grade ____

1. The spot welder should be used in a wet, damp work area. T F
2. The spot welder should always be left plugged in and the current left on. T F
3. After welding, the tips of the spot welder are very hot. T F
4. The metal being spot-welded must be clean and dry. T F